

Double Sided Blocks

Appendix B

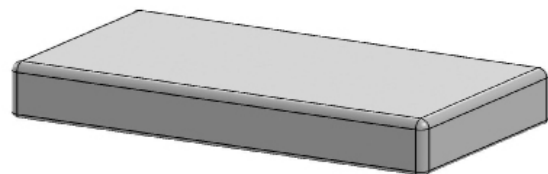
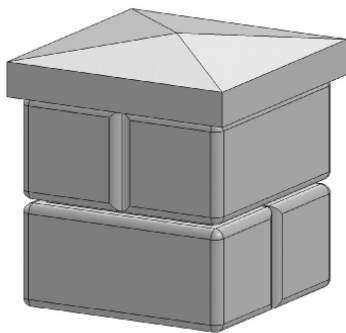
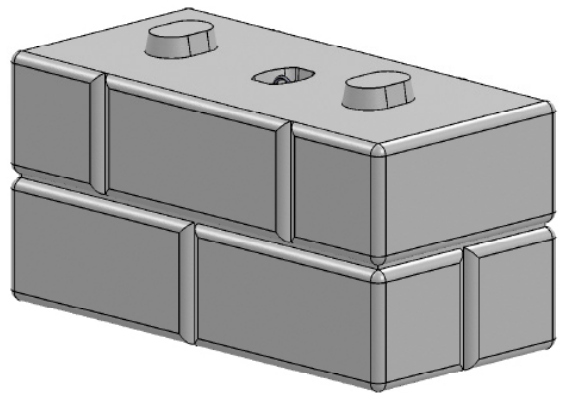
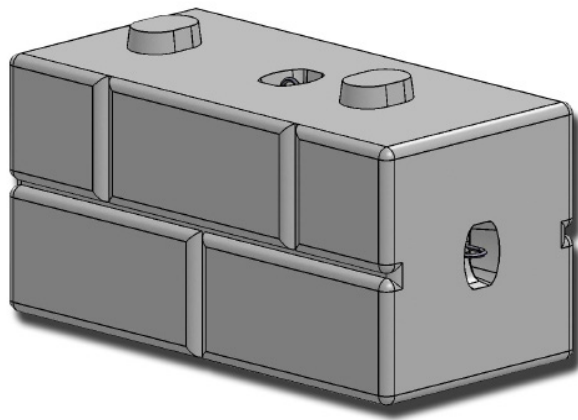


www.verti-block.com



Verti-Block Double-Sided Solution

Verti-Block™ was created with landscaping in mind - to retain earth where it is needed in the most attractive and cost effective way. As residential communities, commercial campuses, schools, parks, and back yards have utilized the Verti-Block system, there has been a need to employ solutions that require double-sided blocks. Verti-Block's double-sided blocks allow designers to expand the use of the Verti-Block system across a wide variety of applications.



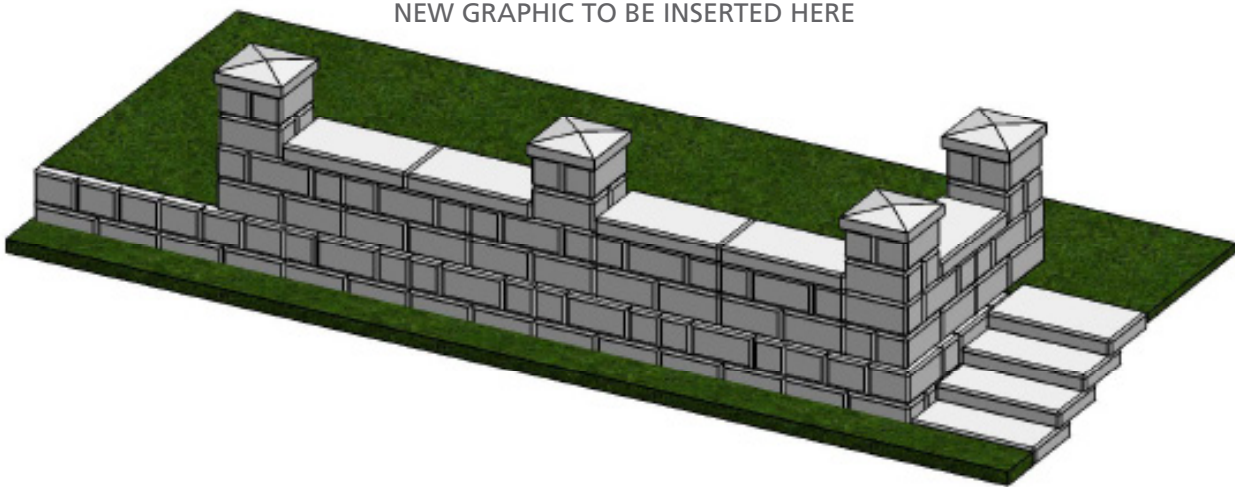
Through utilizing innovative forms and techniques, Verti-Block double-sided products will enable project designers to incorporate many needed solutions to satisfy the customer and increase revenue for each project.

Applications

Parapet / Sitting / Perimeter Walls

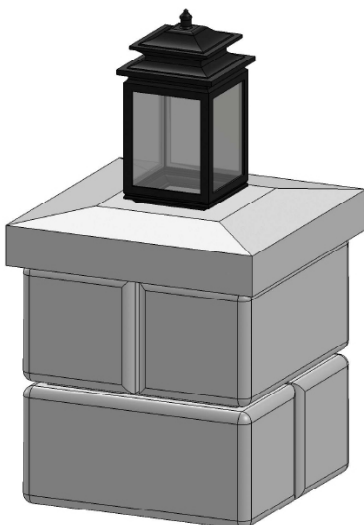
There are many applications where a perimeter wall is required to provide a barrier, accommodate sitting or simply extend a level surface and define a property line. The use of Verti-Block double-sided blocks can be used to incorporate a parapet wall as a design feature as well as a safety barrier. Parapet walls can bring many solutions to a project when designed and constructed properly.

NEW GRAPHIC TO BE INSERTED HERE

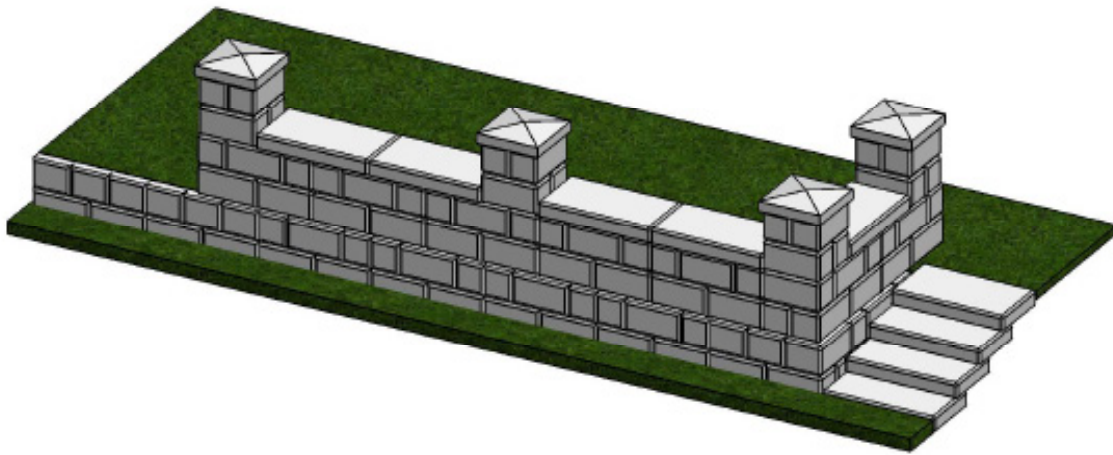


Columns / Community Signs

Verti-Block columns are great additions to any fence or parapet wall that requires variety to any project. Columns can be modified to incorporate signs, fences, rails and many other design features that may be required. Columns can be free standing or placed on top of Verti-Blocks depending on the design. As the core is hollow, conduit can be left through the core if needed for lighting or other features.



Applications

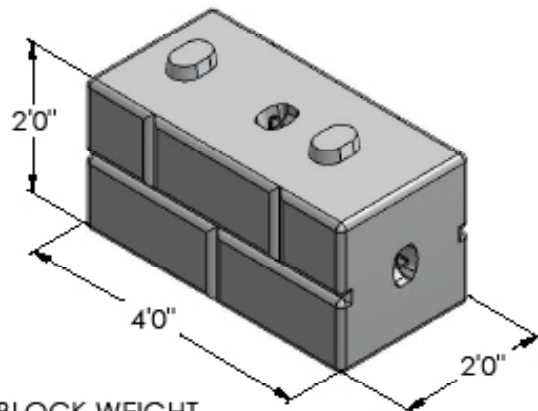


Perimeter Wall Benefits:

1. SAFETY - Parapet walls allow the project to retain earth while also creating a barrier that provides protection from pedestrians or vehicles. Various options can be incorporated into the wall such as stand alone columns or railings / fencing between the columns.
2. ESTHETICS - Through using Verti-Block's double sided blocks and columns, one can design a parapet wall to incorporate the stone texture on all viewable sides to allow a pleasing visual design. Using these types of walls provides attractive accent pieces or separation of landscapes that are needed in many designs.
3. PARKING - Parapet walls are a perfect solution for parking lots that require retained earth to maximize available space. Parapet walls also provide a required barrier for automobile safety. It is common practice to retain parking lots to maximize land space while providing protection and safety.
4. VERSATILITY - when elevations change rapidly or the project requires an aggressive step down, parapet walls provide a convenient option to the project that also negates the possibility of seeing any unfinished surface.

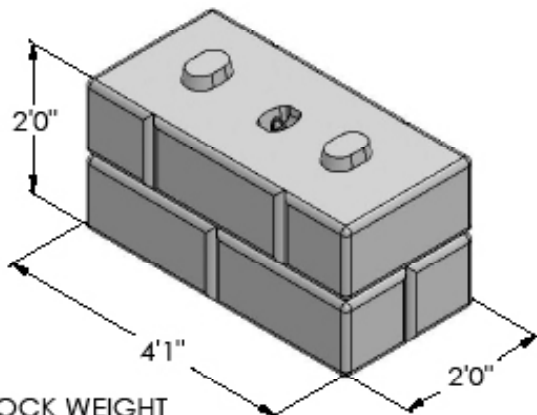
2 & 3 SIDED BLOCK SERIES

2-SIDED BLOCK WITH LUG



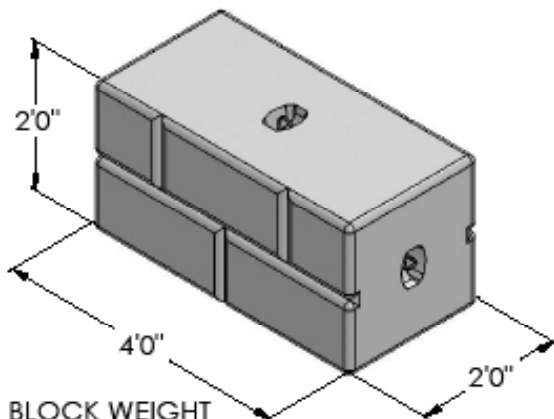
BLOCK WEIGHT
2126 LBS

3-SIDED BLOCK WITH LUG



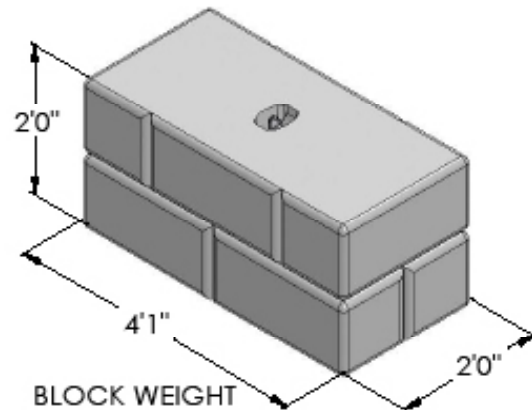
BLOCK WEIGHT
2162 LBS

2-SIDED BLOCK WITHOUT LUG



BLOCK WEIGHT
2118 LBS

3-SIDED BLOCK WITHOUT LUG



BLOCK WEIGHT
2170 LBS

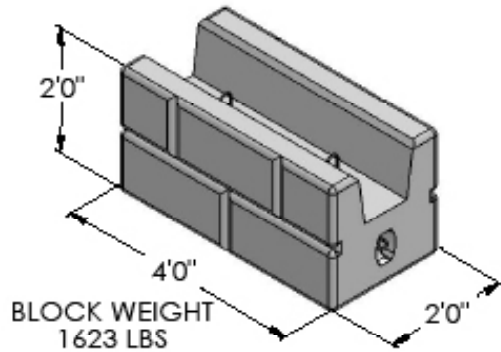


DRAWN BY	DATE
R FONTANESI	2/11/2016
16500 SOUTH 500 WEST BLUFFDALE, UTAH 84065 PHONE: (801) 571-2028	

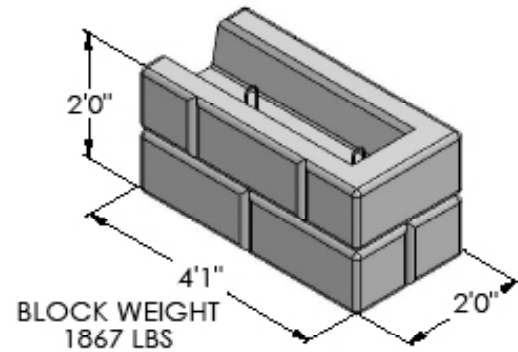
TITLE: 2 & 3 SIDED BLOCKS	
DWG NO. BD-13	REV. 02
SCALE: NA	WEIGHT: SEE ABOVE SHEET 1 OF 3

2 & 3 SIDED BLOCK SERIES

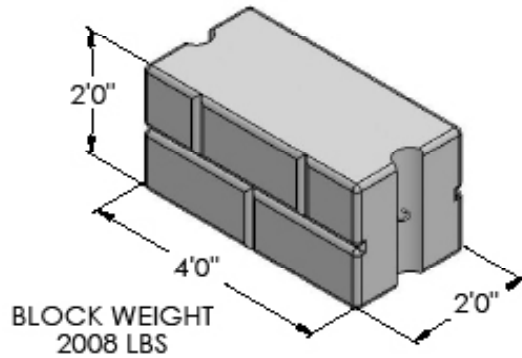
2-SIDED PLANTER BLOCK



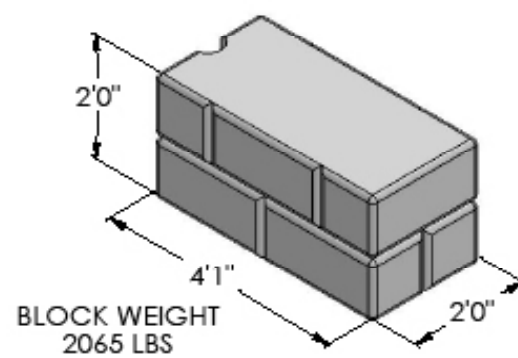
3-SIDED PLANTER BLOCK



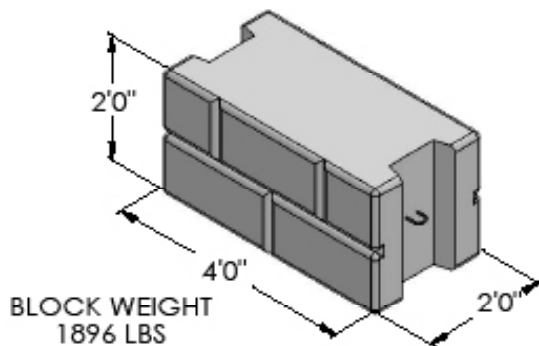
2-SIDED IMPACT PROTECTION BLOCK



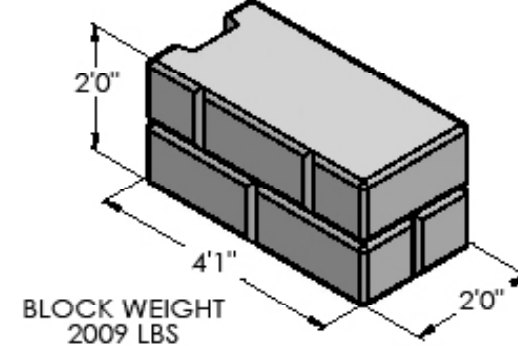
3-SIDED IMPACT PROTECTION BLOCK



2-SIDED VARIABLE CURVE BLOCK



3-SIDED VARIABLE CURVE BLOCK



DRAWN BY
R FONTANESI

DATE
2/11/2016

16500 SOUTH 500 WEST
BLUFFDALE, UTAH 84065
PHONE: (801) 571-2028

TITLE
2 & 3 SIDED BLOCKS

DWG NO.
BD-13

SCALE: NA

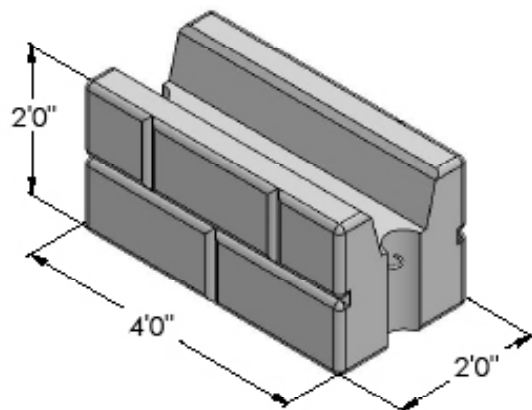
WEIGHT: SEE ABOVE

SHEET 2 OF 3

REV.
02

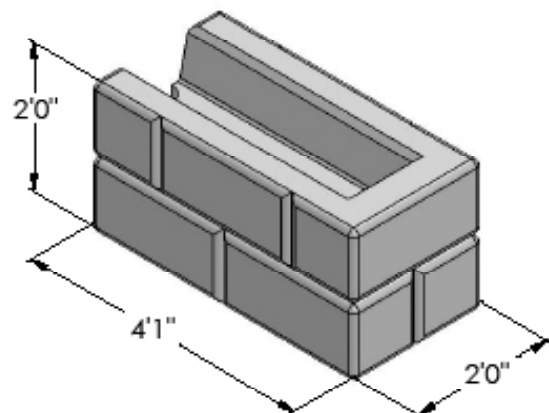
2 & 3 SIDED BLOCK SERIES

2 SIDED IMPACT PROTECTION/PLANTER BLOCK



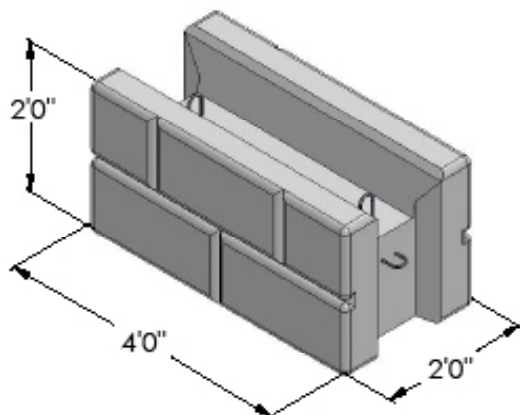
BLOCK WEIGHT
1696 LBS

2 SIDED IMPACT PROTECTION/PLANTER BLOCK



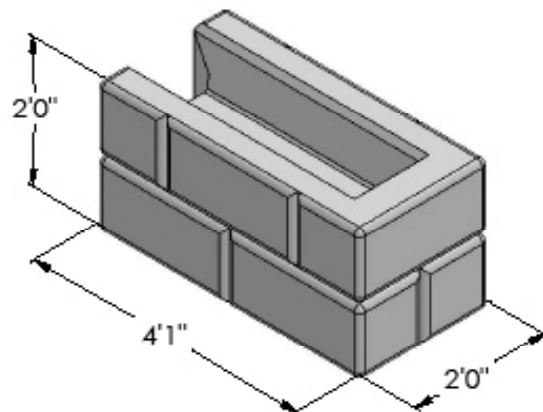
BLOCK WEIGHT
1848 LBS

2 SIDED VARIABLE CURVE/PLANTER BLOCK



BLOCK WEIGHT
1608 LBS

3 SIDED VARIABLE CURVE/PLANTER BLOCK

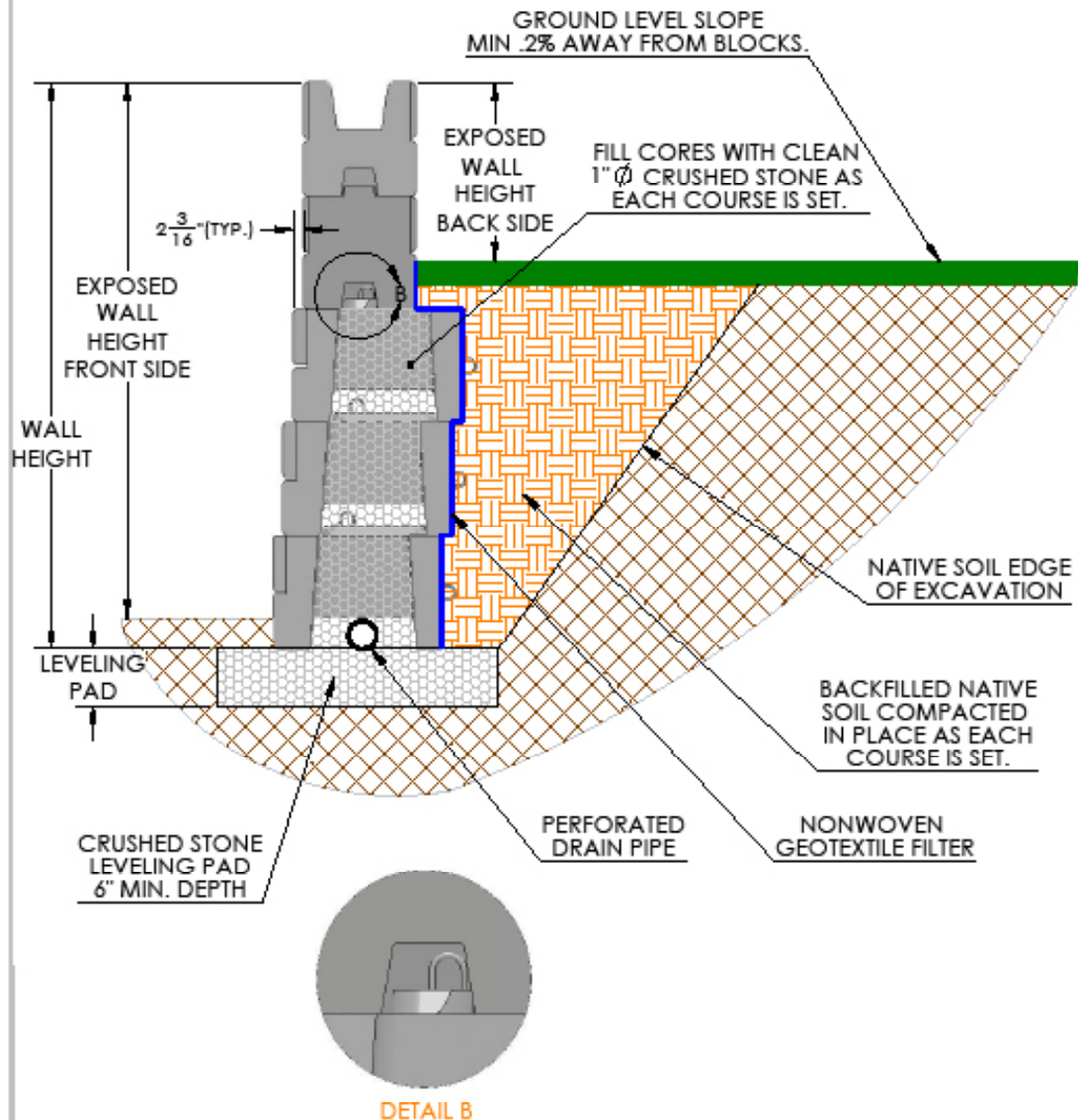


BLOCK WEIGHT
1809 LBS



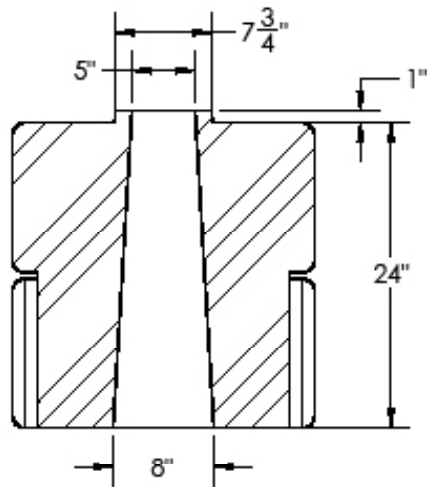
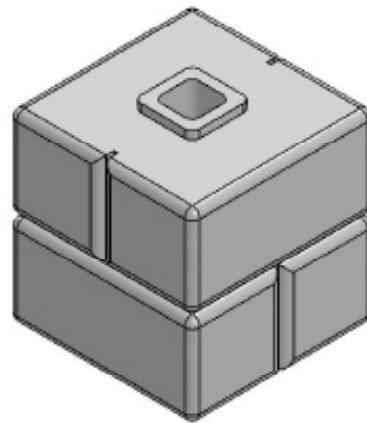
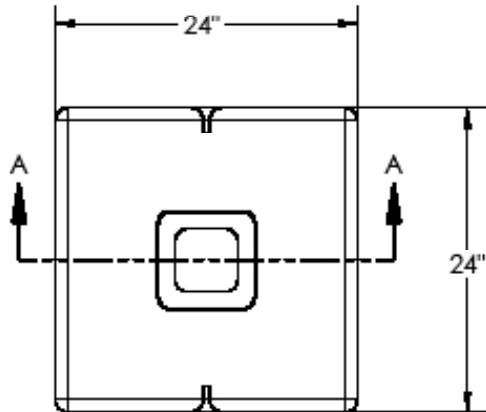
DRAWN BY	DATE	TITLE	
R FONTANESI	2/11/2016	2 & 3 SIDED BLOCKS	
16500 SOUTH 500 WEST BLUFFDALE, UTAH 84065 PHONE: (801) 571-2028		DWG NO.	REV.
		BD-13	02
SCALE: NA		WEIGHT: SEE ABOVE	SHEET 3 OF 3

GRAVITY WALL WITH 36" & 2-SIDED VERTI-BLOCK



DRAWN BY	DATE
R FONTANESI	7/10/2015
16500 SOUTH 500 WEST BLUFFDALE, UTAH 84065 PHONE: (801) 571-2028	

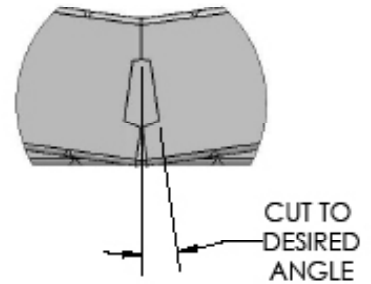
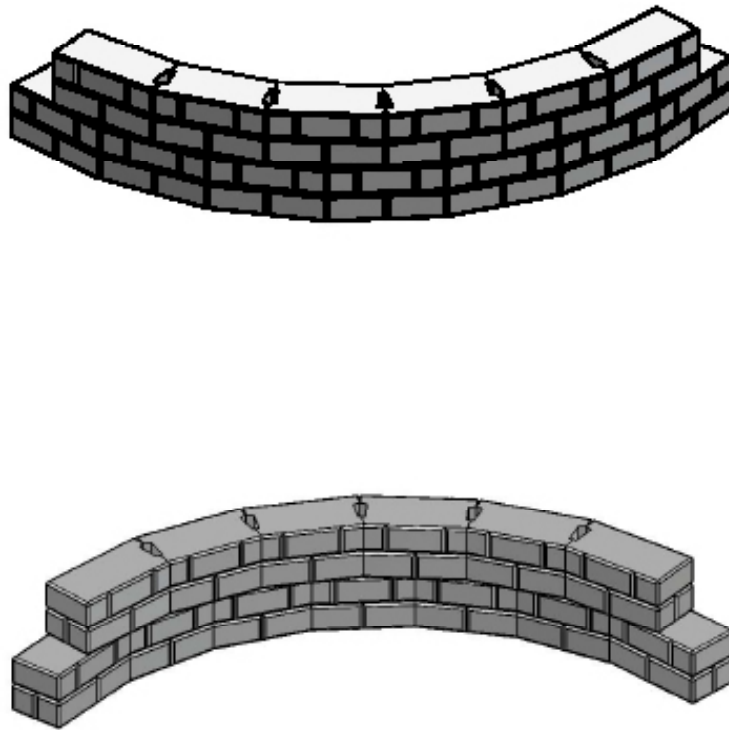
TITLE:	10' WALL WITH 2-SIDED BLOCKS
DWG NO.	WD-27
SCALE: 1:30	SHEET 1 OF 1



SECTION A-A



DRAWN BY	DATE	TITLE FREE STANDING COLUMN BLOCK	
R FONTANESI	5/3/2016		
16500 SOUTH 500 WEST BLUFFDALE, UTAH 84065 PHONE: (801) 571-2028		DWG NO. BD-22	REV. 01
SCALE: NA		WEIGHT: 1785817.74	SHEET 1 OF 1



DRAWN BY	DATE
R FONTANESI	7/13/2015
16500 SOUTH 500 WEST BLUFFDALE, UTAH 84065 PHONE: (801) 571-2028	

TITLE:	2&3-SIDED VARIABLE CURVE BLOCKS
DWG NO.	WD-29
SCALE: 1:30	SHEET 1 OF 1