

TERRACE WALL™



Terrace Wall Harvest Blend



Autumn Blend



Dakota Blend



Harvest Blend



Pewter Blend

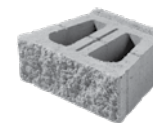
ENLARGED SWATCHES ON PAGE 137. SEE PAGE 109 FOR CAP OPTIONS.

FORMULAS/NOTES

- 1.5 pieces = 1 sf of wall face
- Minimum inside radius = 22" (from back of block)
- Maximum unreinforced wall height = 30" under ideal conditions
- Geogrid must be used for walls above 30"

Many of EP Henry's products are created using a blend of several fine pigments and it is normal to find a range of color(s) most predominant from unit to unit. For best dispersion and to achieve a natural range of the colors throughout your project, be sure to draw from multiple cubes as you install.

These units are 6" high.



| TERRACE WALL | STRETCHER | CORNER |
|---------------|-----------|----------|
| SIZE (LxD) | 16" x 12" | 16" x 8" |
| PCS PER SF | 1.5 | 1.5 |
| SF PER CUBE | 48 | 72 |
| PCS PER CUBE | 72 | 108 |
| LBS PER PIECE | 51 | 45 |
| LBS PER CUBE | 3,665 | 4,838 |