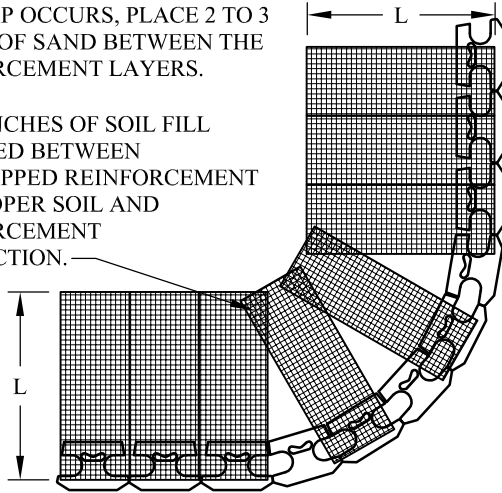


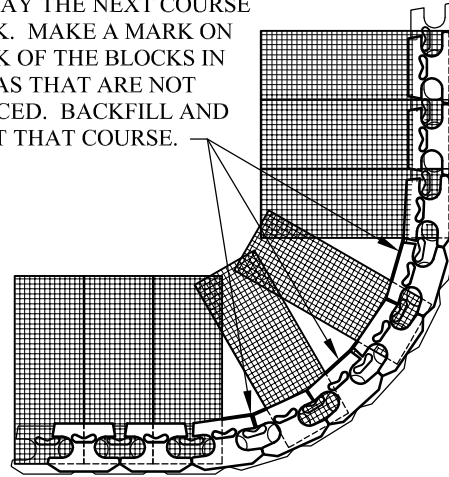
STEP 1 - PLACE REINFORCEMENT SO THAT LITTLE OR NO OVERLAP OCCURS IN THE RADIUS AREA. IF OVERLAP OCCURS, PLACE 2 TO 3 INCHES OF SAND BETWEEN THE REINFORCEMENT LAYERS.

2 TO 3 INCHES OF SOIL FILL REQUIRED BETWEEN OVERLAPPED REINFORCEMENT FOR PROPER SOIL AND REINFORCEMENT INTERACTION.

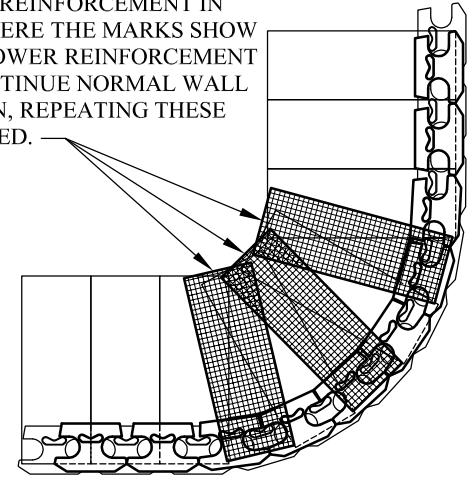
PRIMARY STRENGTH DIRECTION
L



STEP 2 - LAY THE NEXT COURSE OF BLOCK. MAKE A MARK ON THE BACK OF THE BLOCKS IN THE AREAS THAT ARE NOT REINFORCED. BACKFILL AND COMPACT THAT COURSE.

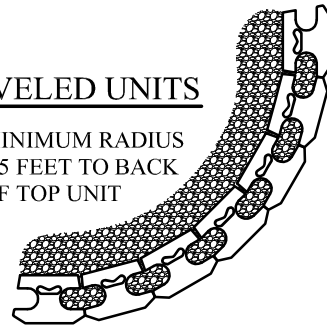


STEP 3 - PLACE REINFORCEMENT IN THE AREAS WHERE THE MARKS SHOW GAPS IN THE LOWER REINFORCEMENT PATTERN. CONTINUE NORMAL WALL CONSTRUCTION, REPEATING THESE STEPS AS NEEDED.



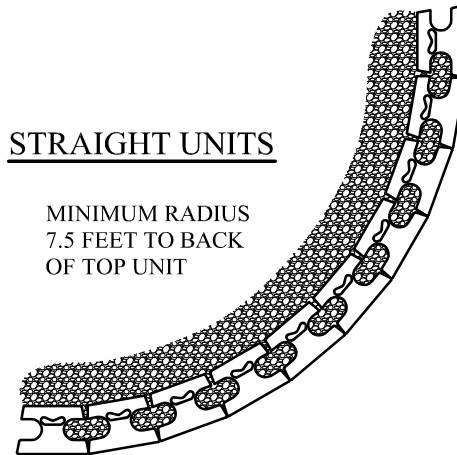
BEVELED UNITS

MINIMUM RADIUS 4.5 FEET TO BACK OF TOP UNIT



STRAIGHT UNITS

MINIMUM RADIUS 7.5 FEET TO BACK OF TOP UNIT



Anchor Wall Engineering, LLC
5959 Baker Road, Suite 390
Minnetonka, MN 55345

These graphic representations are intended for preliminary design purposes only and are not to be used for construction without the signature of a registered professional engineer.

© 2010 Anchor Wall Engineering, LLC
® and ™ Anchor Wall Systems, Inc.

Drawn By: AWE
Date: 5/21/2010
Scale: 3/8"=1'-0"

Drawing Title:

Vertica® Retaining Wall System
Outside Curve Details

Project Information:

Typical Details For
Conventional Retaining Walls