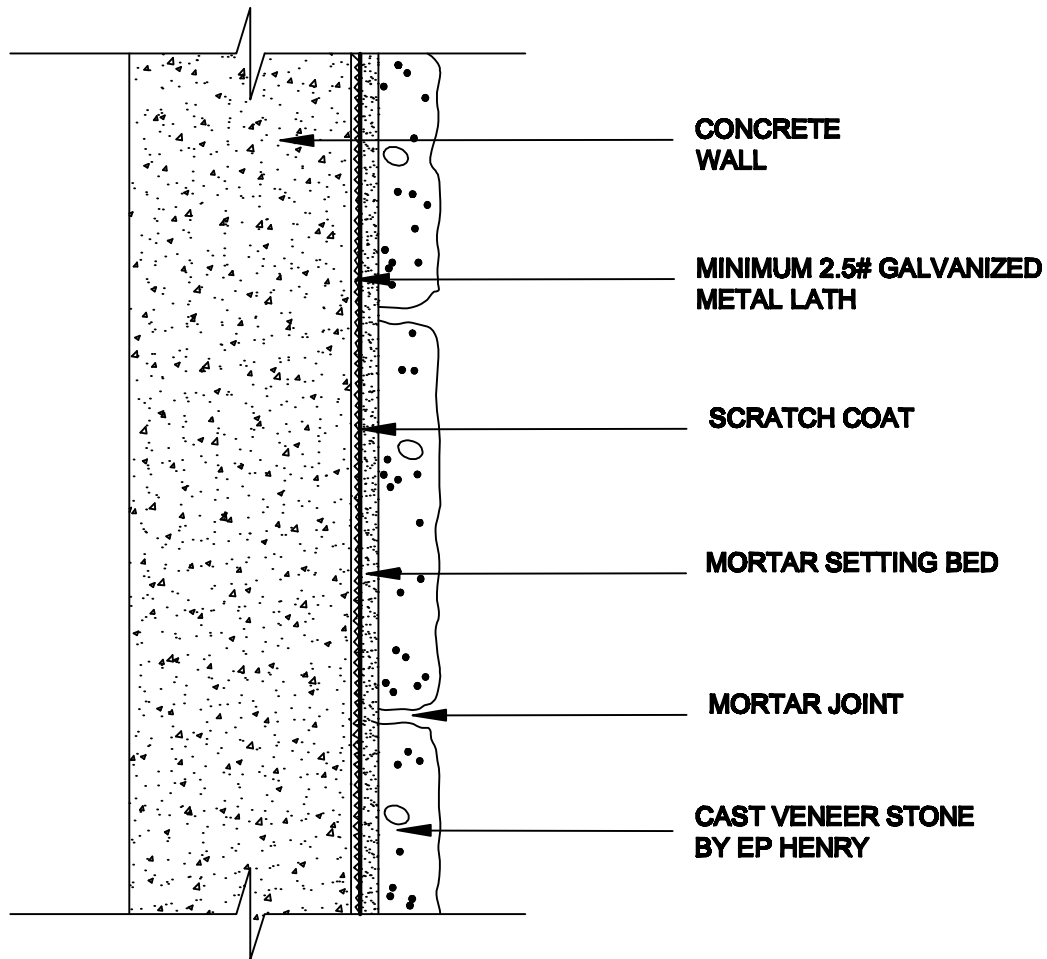


CAST VENEER STONE BY EP HENRY
 Typical Installation Detail for Stained or Sealed Masonry,
 Concrete or Stucco



NOTE: SUBSTRATE MUST BE CLEAN AND FREE FROM DIRT AND OTHER FOREIGN MATERIAL BEFORE INSTALLATION OF STONE

Stained or Sealed Masonry,
 Concrete or Stucco

EP HENRY
 F O U N D E D 1 9 0 3

Call 1-800 44 Henry

Ref. No.

201 Park Avenue, PO Box 615
 Woodbury, NJ 08096

Figure 1