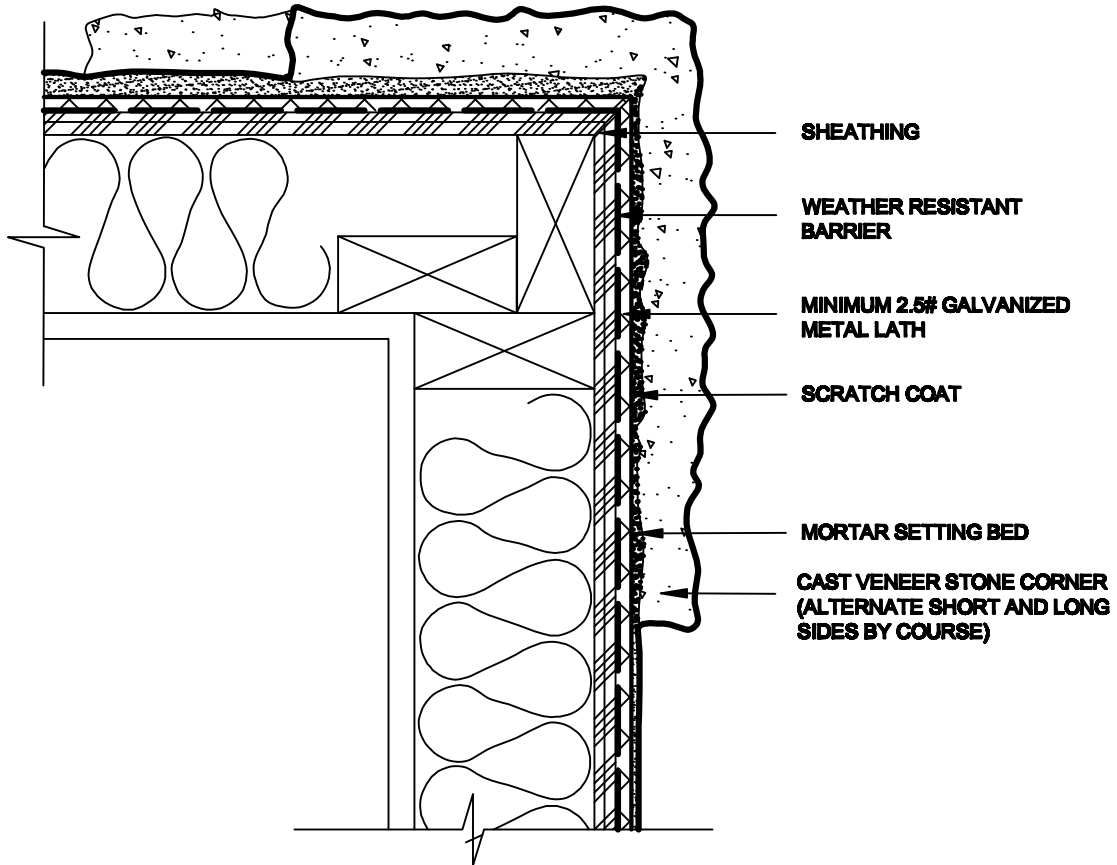


CAST VENEER STONE BY EP HENRY  
 Typical Installation Detail for Corner Treatment



**VENEER CORNER PREPARATION:**  
 WEATHER-RESISTANT BARRIER AND GALVANIZED METAL LATH MUST CONTINUOUSLY LAP A MINIMUM 16" BEYOND OUTSIDE AND INSIDE CORNERS. LAP MATERIALS 4" ON HORIZONTAL AND VERTICAL JOINTS.

CORNER TREATMENT

**EP HENRY**  
 F O U N D E D 1 9 0 3

**Call 1-800 44 Henry**

Ref. No.

201 Park Avenue, PO Box 615  
 Woodbury, NJ 08096

**Figure 5**